









OK



## **LANDSCAPE DESIGN WATER CORP ART TRAIL SITE**

The overall landscape plan is designed to showcase the proposed Art works, a large tree sculpture and painted images on existing Water Corp infrastructure, whilst allowing continued and easy access to the site and infrastructure.

Local riparian species suited to the landscape site have been selected to showcase our fabulous flora, for ease of establishment and maintenance and long term survival.

Block planting of solid shrub and understory species provides high design impact of foliage and flower colour and form.

Solid plantings provide rapid and dense establishment reducing ongoing maintenance/ weed issues.

The design begins at the North end of the site with a central wave echoing the watercourse, directing the eye to a circular pool like planting in the gravelled area housing the Water Corp infrastructure and painted art works.

This pool like element, reminiscent of a swampy wetland, is flanked with small to medium paperbark trees which provide height, structure and the framing background for artworks painted on the existing infrastructure. Thus the artworks are

incorporated into the landscape planting whilst visually standing apart.

The majority of the existing gravelled area surrounding the infrastructure remains clear, allowing ongoing access for maintenance, inviting public exploration of an open laterite landscape in itself encapsulated and sheltered within a wetland area.

The south end of the laterite landscape area again echoes a circular wetland massed with decorative sedges, kangaroo paws and flanked by small to medium paperbarks.

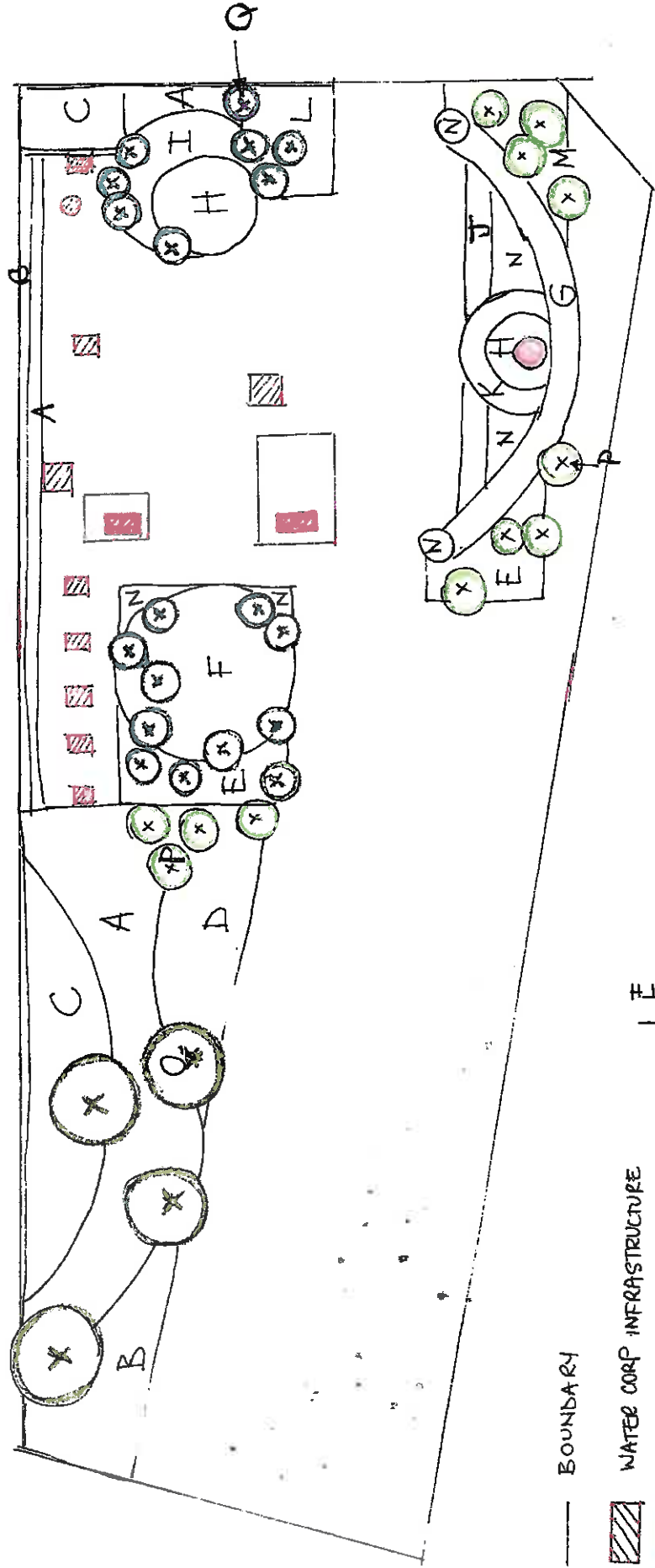
The sculptural art piece sits within a semi- circular and circular Creekside landscape design of which it is the focal point.

Surrounding plantings allow the sculpture to rise above other design elements. Flowering River Banksias, small to medium trees, flank the background edge of the creek planting providing colour and height to draw the eye to the central sculpture.

Central circular plantings at the base of the sculpture provide a bull's eye definition and emphasis to the art work.

Natalee Kuser June 2019

# Water Corporation Art Trail Landscape Design June 2019



1:250 @ A3

Natalee Kuser  
 natalee@nextpractice.com.au  
 0428 410 638

Supplied to

WATER CORP

## WATER CORP ART TRAIL LANDSCAPE DESIGN

nil

Contact CHERYL HAMENCE

GENUS	SPECIES	COMMON NAME	TYPE	70-cell tray	50mm tube 40/tray single species	50mm tube <40/tray mixed species	50mm tube cutting or sedge	forester tube 40/tray single species	forester tube <40/tray mixed species	75 mm pot	150 mm pot	175 mm pot	TOTAL PLANTS	TOTAL COST (excl GST)
<b>PRICES --&gt; (excluding GST)</b>														
<i>Callistemon</i>	<i>phoeniceus</i>			3	\$1.00	\$1.50	\$1.80	\$2.00	\$2.50	\$3.00	\$5.00	\$7.50	210	\$150.00
<i>Hakea</i>	<i>lasianthoides</i>							40					40	\$80.00
<i>Melaleuca</i>	<i>viminea</i>			1									70	\$50.00
<i>Taxandra</i>	<i>linearifolia</i>				53								53	\$53.00
<i>Lepidospermum</i>	<i>persicans</i>										20		20	\$100.00
<i>Gastrolobium</i>	<i>sericeum</i>							93					93	\$186.00
<i>Meeboldina</i>	<i>royceii</i>				40								40	\$40.00
<i>Anigozanthus</i>	<i>flavidus</i>	Green			40								40	\$40.00
<i>Ficinia</i>	<i>nodosa</i>			3									210	\$150.00
<i>Hakea</i>	<i>varia</i>				10								10	\$10.00
<i>Melaleuca</i>	<i>incana</i>				25								25	\$25.00
<i>Eucalyptus</i>	<i>patens</i>				4								4	\$4.00
<i>Banksia</i>	<i>semi-nuda</i>				10								10	\$10.00
<i>Melaleuca</i>	<i>preissiana</i>				20								20	\$20.00

